

EuroVelo History



Jens Erik Larsen
Foreningen Frie Fugle
& EuroVelo Council

Nantes 2. nd of June 2015



EuroVelo history started 20 years ago



..or maybe a little before....

DE 11 NATIONALE CYKELRUTER



Twelve international cycle routes to change the face of Europe

EuroVelo® is a registered trade mark of the European Cyclists' Federation



North - South Routes:

- ① Atlantic Coast Route: North Cape - Sagres 8,186 km
- ③ Pilgrims Route: Trondheim - Santiago de Compostela 5,122 km
- ⑩ Via Romea Francigena: London - Rome and Brindisi 3,900 km
- ⑫ Middle Europe Route: North Cape - Malta 6,000 km
- ⑮ Baltic Sea to Adriatic Sea (Amber Route): Gdansk - Pula 1,930 km
- ⑯ East Europe Route: North Cape - Athens 5,984 km

West - East Routes:

- ② Capitals Route: Galway - Moscow 5,500 km
 - ④ Roscoff - Kiev 4,000 km
 - ⑥ Atlantic Ocean to Black Sea (Rivers Route): Nantes - Constanta 3,653 km
 - ⑦ Mediterranean Route: Cadix - Athens and Cyprus 5,888 km
- Circuits:
- ⑧ Baltic Sea Cycle Route (Hansa circuit) 7,980 km
 - ⑨ North Sea Cycle Route 5,932 km
- Total network: 64,075 km

1

EUROPEAN CYCLE ROUTES

a report on national and international developments

Horsens	7.0
Stensballe	4.0

November 1996

CYCLING WITHOUT BORDERS

TOWARDS A EUROPEAN NETWORK OF
LONG-DISTANCE CYCLE ROUTES

INTERNATIONAL COLLOQUIUM

BRUGES, 10TH - 11TH MAY 1996

CONGRESS REPORT





EuroVelo

EUROPEAN CYCLE ROUTE NETWORK

The EuroVelo project is a proposal put forward by the *European Cyclists' Federation (ECF)* to develop a European Cycle Route Network spanning the whole continent within a time scale of some 15 years. Whilst designed for holiday cyclists from abroad, such a network would naturally also cater to local cyclists, for both utility and recreational purposes.

A working group within the ECF has produced an initial proposal comprising 12 pan-European routes. Linking all European countries, this network would be largely based on existing and planned routes at a national, regional and local level. The project involves aspects of many divergent fields: transport, tourism, recreation, environment, congestion and road safety, regional development, public health and fitness, cultural exchange.

The development of the EuroVelo network would be organised at two levels. A central network-wide bureau would produce standards, guidelines and procedures. Through its preparatory work on the project and its close connections with the field of European cycle tourism, the ECF would be a natural partner here. Each route would then be developed and maintained by its own individual management organisation,

established by the appropriate authorities and other bodies connected with that particular route.

The opening of the first route is envisaged in the Spring of 2000. Thereafter, the aim would be to open a new route each year until 2011. Routes would be opened on attainment of a "satisfactory" level but would continue to be developed to a "desired" level. A process of incremental development would thereafter ensure the continual improvement of the network.

The aim of the network is to promote cycle touring and thereby cycling in general. In so doing, European tourism would be encouraged to develop along sustainable lines. A whole range of benefits would accrue from this, ranging from preservation of the environment and creation of small-scale employment opportunities to promotion of European cohesion and upholding rural settlements. There would also be a range of spin-off effects ranging from improving public health and fitness to easing traffic congestion.

National cycle networks are already in place in several European countries, notably in Denmark and the Netherlands. Some countries are in the process of completing national networks, notably the UK and Switzerland, whilst others already have extensive networks of long-distance routes, notably Germany and Austria. The EuroVelo network would be based on existing routes wherever possible and would not itself give rise to any large amount of construction work. Information and signposting at the European level would be catered for by high-level maps, brochures and guides which would lead the tourist to existing products at the national, regional or local level.

Funding is now being sought to develop a detailed activity plan for the EuroVelo project, to cover the initial three-year period 1998–2000. This plan will cover the inauguration and initial work of the 12 route management organisations and propose guidelines for their structure as well as detailing the co-ordination functions to be performed by the central bureau. The plan

European Cycle Routes

a report on national and international developments





Logroño, 20, 21 y 22 de noviembre de 1997

Congreso Europeo sobre Itinerarios Culturales y Rutas Temáticas

CONFERENCIA EUROVELO

Logroño, November 20th, 21st and 22nd 1997

European Congress about Cultural Itineraries and Thematic Routes

EUROVELO CONFERENCE



EUROPEAN
CYCLE
ROUTE
NETWORK

EuroVelo

Conferencia
de Presentación

Objetivo: Definición y presentación del Proyecto EuroVelo: Red Europea de Grandes Rutas para Cicloturismo.

¿Qué es EuroVelo? Un proyecto impulsado por la Federación Europea de Ciclistas, con el respaldo de la Comisión Europea y organismos nacionales, destinado a desarrollar una Red Europea de Rutas Cicloturistas. Itinerarios sin tráfico motorizado, que cruzan las fronteras para acercar a los ciudadanos de la Europa del futuro. Rutas fáciles, seguras, accesibles, siguiendo los grandes itinerarios culturales. Para que todos disfrutemos de una mayor calidad de vida.

Dirigido a: Organismos, colectivos, medios de comunicación, promotores y usuarios de la U.E. y de otros países europeos.

Precio de inscripción: 15.000 Ptas. Se han solicitado a la Comisión Europea ayudas para viajes y estancias.

Traducción simultánea Español-Inglés.

Organizan:



Patrocinan:



Logroño,
20 a 22 de Noviembre
de 1997

Programa:

- Presentación del Proyecto EuroVelo en el Congreso Europeo de Itinerarios Culturales (20 de Noviembre).
- Conferencia de Presentación del Proyecto EuroVelo.
 - Criterios para selección de rutas.
 - Desarrollo de la Red, señalización, diseño, promoción...
 - Apoyo de la Comisión Europea y de organismos nacionales.
 - Financiación.
- Visita a la Uía Verde del Cidacos.

Más Información:

Srtas. Ana López y Carmen Lorenzo
Fundación de los Ferrocarriles Españoles
c/ Santa Isabel, 44 . 28012 Madrid-E
Tlf: 34-1-539 23 51 / 528 28 15
Fax: 34-1-528 09 86
viasverdes<fuepu02@renfe.es>



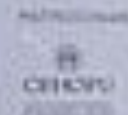
EuroVelo

EUROPEAN CYCLE ROUTE NETWORK



CONFERENCIA DE PRESENTACION LAUNCH CONFERENCE

LOGROÑO, 20 A 22 DE NOVIEMBRE DE 1997



Organizado por



21-11-97



pirinexus

RUOTA CICLOTURÍSTICA CATALANA



GUIDE ET PLAN DES SERVICES DE L'ITINÉRAIRE



VIAS VERDES

1	Vía Verde de la Camocha	17
2	Vía Verde del Lieres	24
3	Vía Verde del Pilugo	31
4	Vía Verde de Galdames	37
5	Vía Verde de Estibaliz	45
6	Vía Verde de Maestu	53
7	Vía Verde de la Foz de Lumbier	60
8	Vía Verde del Camí de Ferro	69
9	Vía Verde de Girona-Costa Brava	79
10	Vía Verde del Llobregat	89
11	Vía Verde del Tarazonica	95
12	Vía Verde del Campo de Borja	106
13	Vía Verde de Préjano	113
14	Canal de Castilla (I)	121
15	Canal de Castilla (II)	131
16	Canal de Castilla (III)	139
17	Vía Verde de la Demanda	149
18	Vía Verde del Moncayo	162
19	Vía Verde de Ojos Negros (I)	171
20	Vía Verde de Ojos Negros (II)	186
21	Vía Verde del Tajuiña	198
22	Vía Verde de La Poblachuela	207
23	Vía Verde del Ojailén	213
24	Vía Verde del Horcajo	220
25	Vía Verde del Campo de Cartagena	226
26	Vía Verde de Mazarrón	237
27	Vía Verde del Aceite (I)	244
28	Vía Verde del Aceite (II)	253
29	Vía Verde del Odiel	260
30	Vía Verde de Riotinto	268
31	Vía Verde de Sierra Nevada	277

EuroVelo Management Team

European Cyclists' Federation

Marie Caroline Coppieters,
Secretary General, European Cyclists'
Federation

Rue de Londres 15 (boite 3)
1050 Brussels, Belgium
Tel. +32 2 512 9827
fax. +322 511 5224
e-mail: office@ecf.com

Sustrans

Philip Insall, International Liaison Manager
Sustrans
35 King Street
Bristol BS1 4DZ, UK
Tel. +44 117 926 8893
fax +44 117 929 4173
e-mail: philipi@sustrans.org.uk

Route co-ordinator

De Frie Fugle

Jens Erik Larsen, Bicycle Planner
Borgergad 6
DK-1300, København K, Denmark
Tel. +45 33 11 11 75
fax. +45 33 11 75 12
e-mail: friefugl@post8.tele.dk



EuroVelo match funders

European Travel Commission	EUR	Region of Leon & Castilla	E
CYCLEEUROPE AB GROUP (Bicycle Manufacturer)	EUR	Region of la Rioja	E
Int. Gartenschau 2000, Steirmark (Tel +43 316 244 424, Fax + 6)	A	Region of Navarra	E
Donau Touristik (Tel. +43 732 779577, Fax +43 732 779677)	A	Region of Valencia	E
GRACQ	B	Estonian Road Administration	EE
Region de Bruxelles-Capitale	B	Min. of Transport and Communication	FIN
Toerisme Vlaanderen	B	Province of Reggio Emilia	I
Velobüro Olten	CH	Province of Torino	I
Veloland Schweiz	CH	Letzebuerger Velos-Initiativ (LVI)	L
Verkehrs-Club der Schweiz (Tel +41 31 328 82 00)	CH	Pedalnor (Tel + 47 51 66 40 60)	N
Croatian National Tourist Board	CRO	Rogaland County	N
RDA Central Moravia (Tel + 420 68 5416618)	CZ	Fietsplatform (Tel + 31 334 65 36 56)	NL
Czech Tourist Board	CZ	Dutch Tourist Board	NL
City of Copenhagen	DK	Cyclists Touring Club (Tel + 44 1483 417217)	UK
Danish Cyclists' Federation (Tel +45 3323121)	DK	Dept. of Environment Transport & Regions	UK
Danish Tourist Board (Fax + 45 33931416; http://www.dt.dk)	DK	Dover District Council	UK
De Frie Fugle	DK	Dover Harbour Board	UK
Diputacion Foral de Bizkaia	E	Sustrans	UK
Region of Andalucia	E	Welsh Office	UK

note: some of the above organisations offer information about cycling; please contact them using the telephone and fax numbers given

EUROVELO

THE EUROPEAN CYCLE ROUTE NETWORK



**Report on development
June 1998**



EuroVelo® aims to promote a shift to the bicycle from the private car. It is managed by the European Cyclists' Federation, Idéværkstedet De Frie Fugle (DK) and Sustrans (UK) and supported by the European Commission

EuroVelo Style Book

Rules for EuroVelo® reports and letters

To ensure consistency and maximise impact for materials produced by and on behalf of EuroVelo® Management Team and Working Group

April 1998

© Sustrans 1998. Copyright for this document is held by Sustrans Ltd (a charity) until the incorporation of EuroVelo® as an independent organisation and will then pass to EuroVelo. Unauthorised reproduction is forbidden.

EUROVELO
THE EUROPEAN CYCLE ROUTE NETWORK

Manual for the Production of the 12 Route Reports of EuroVelo

Background

The European Cyclists' Federation (ECF) has since 1995 been developing a project proposal for a Europe-wide network of cycle routes, now known as EuroVelo. The European Commission and other sources have agreed to fund a preparatory phase in 1998, to prepare the project to reach its first target date - the opening of the first EuroVelo Cycle Route in year 2000.

The EuroVelo proposal calls for 12 pan-European routes linking all countries of Europe, largely based on existing and planned routes at a national, regional and local level. See the enclosed EuroVelo map.

As well as holiday cyclists, such a network will also cater to local cyclists, for both utility and recreational purposes. It is designed to bring benefits in many fields, including transport, tourism, recreation, environment, congestion and road safety, regional and local development, energy, public health and fitness, and cultural exchange.

Purpose of route reports

- to give an overview of each of the 12 routes
 - describing their course
 - listing known obstacles to their implementation
 - indicating likely timescale
 - showing the scale of funding required for their completion
 - outlining political and administrative framework for development of each route
- to supply the feasibility study with information about technical and organisational facts
- to enable the EuroVelo Man^{age}ement Group to rank the routes in priority order and elect the first to be opened
- to enable revision of the EuroVelo sketch map
- to produce the basis material for a European cyclists' map

Route Report for route number 5 Route Romea Francigena: London – Rome



The North Sea Cycle Route

The longest signed
cycle route 6000 km

7 Countries

67 Regional partners

700 Municipalities

www.Northsea-cycle.com

Opened 2001



The EuroVelo network – cycling through Europe

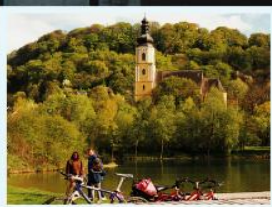


A man in a dark suit and light blue shirt is standing at a wooden podium, gesturing with his right hand as if presenting. He is facing towards the right side of the frame, where the audience is seated.



EuroVelo
the European cycle route network

Guidelines for Implementation



EUROVELO
THE EUROPEAN CYCLE ROUTE NETWORK

EUROVELO
THE EUROPEAN CYCLE ROUTE NETWORK

Twelve international cycle routes to change the face of Europe

EuroVelo® is a registered trade mark of the European Cyclists' Federation



North – South Routes:

- ① Atlantic Coast Route: North Cape - Sagres 8,186 km
- ② Pilgrims Route: Trondheim - Santiago de Compostela 5,122 km
- ③ Via Roma Francigena: London - Rome and Brindisi 3,900 km
- ⑦ Middle Europe Route: North Cape - Malta 6,000 km
- ⑩ Baltic Sea to Adriatic Sea (Amber Route): Gdansk - Pula 1,930 km
- ⑪ East Europe Route: North Cape - Athens 5,984 km

West – East Routes:

- ④ Capitals Route: Galway - Moscow 5,500 km
 - ⑤ Roscoff - Kiev 4,000 km
 - ⑥ Atlantic Ocean to Black Sea (Rivers Route): Nantes - Constanta 3,653 km
 - ⑧ Mediterranean Route: Cádiz - Athens and Cyprus 5,888 km
- Circuits:**
- ⑩ Baltic Sea Cycle Route (Hansa circuit) 7,980 km
 - ⑫ North Sea Cycle Route 5,932 km

EuroVelo Council from 2007









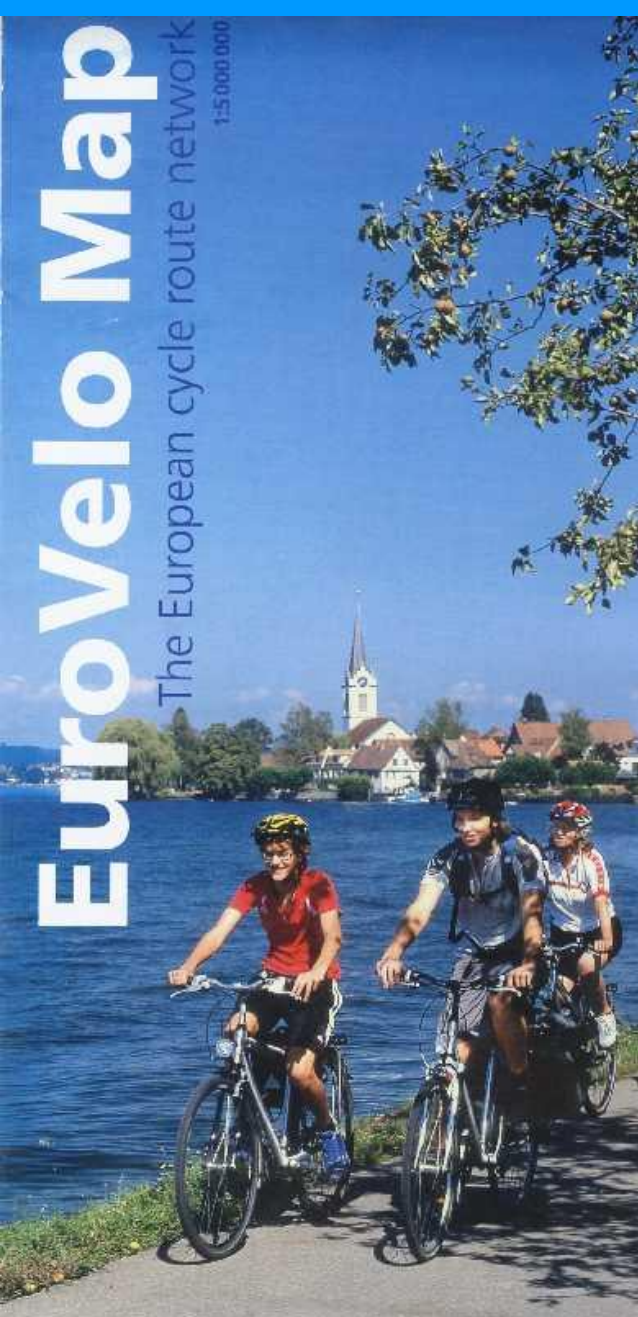
EuroVelo

The European cycle route network



EuroVelo Map

The European cycle route network
1:5 000 000





DIRECTORATE-GENERAL FOR INTERNAL POLICIES

POLICY DEPARTMENT B
STRUCTURAL AND COHESION POLICIES

Agriculture and Rural Development

Culture and Education

Fisheries

Regional Development

Transport and Tourism



**THE EUROPEAN CYCLE
ROUTE NETWORK
EUROVELO
(Provisional version)**

STUDY



EuroVelo

Signing of EuroVelo cycle routes



Examples:

France

Switzerland

Germany

Hungary

Serbia




3
Hærvejen


3
Pilgrimsruten

Viborg Rødding 15
★ 5



Rhine Cycle Route

Market Analysis

Short Version



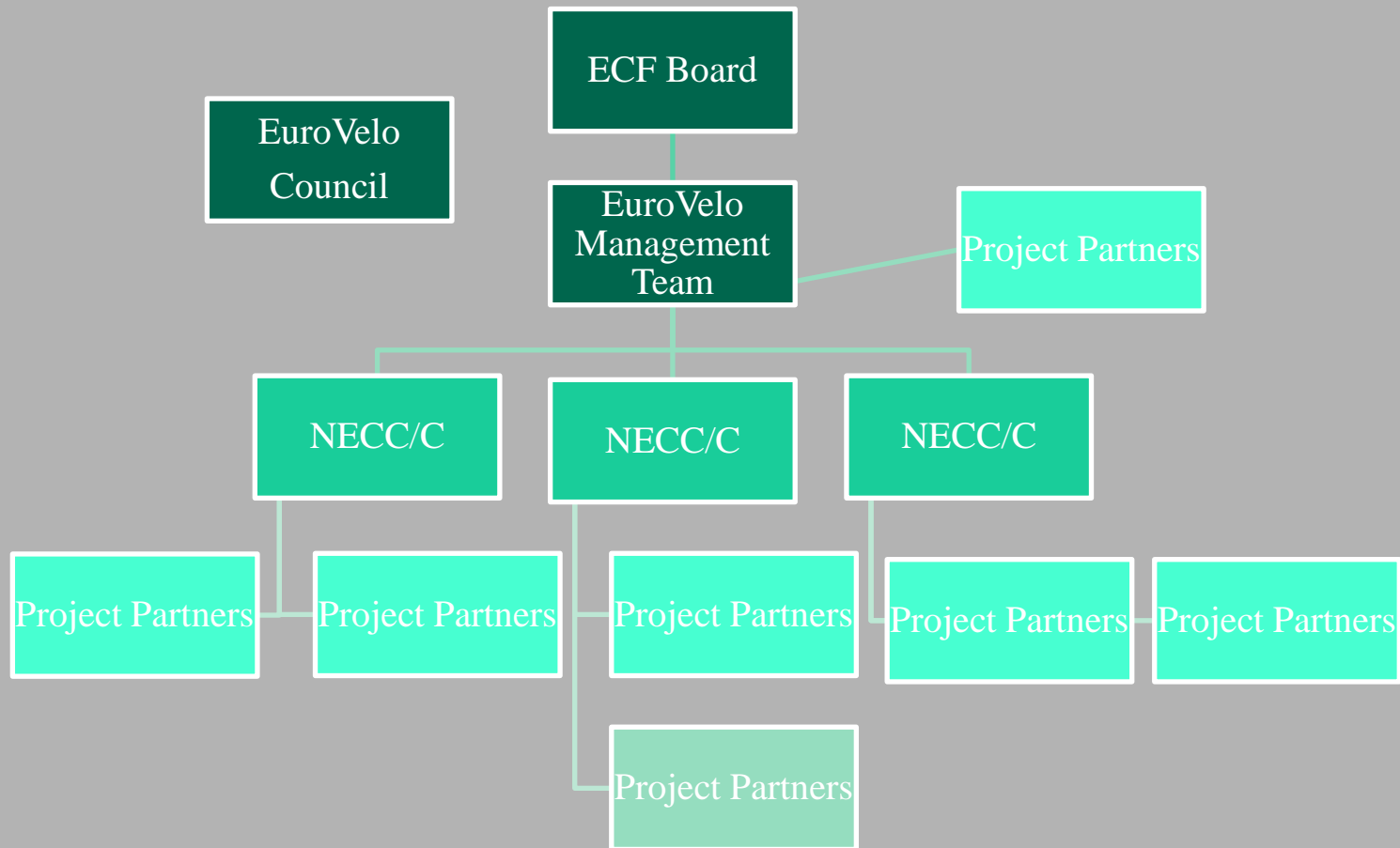
EuroVelo

National Coordination Centres

Guidance on application process



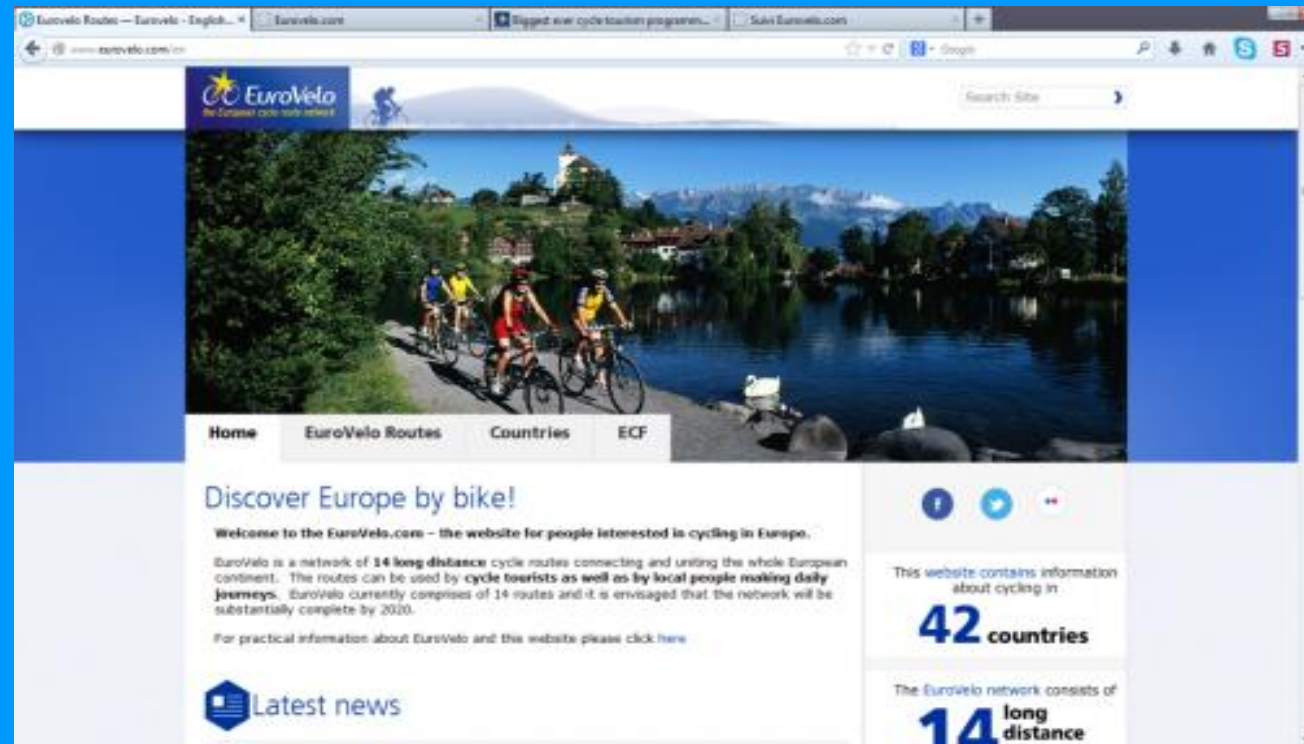
EuroVelo organisation



EuroVelo tools - web

Up-to-date and easily accessible information

- www.eurovelo.com
- EuroVelo facebook



Lucas business



This package connects to EuroVelo 8 – Mediterranean Route, a long distance cycle route that passes through eleven European countries from Spain to Cyprus. The route forms part of EuroVelo, the European cycle route network. EuroVelo 8 is expected to be realised in 2020 by which time it will total 6,000 km. Hundreds of kilometres are already in place waiting to be explored. More information is available from EuroVelo.com.





Cyprus



Albania



BÄRNDORFER HÜTTE



**Wieselburger
Bier**
Schutzmarke

Seit 1770

Fam. Scharl



EuroVelo – lobby goals

Complete EuroVelo by 2020!

Inclusion / reference on
EuroVelo in TEN-T



2013



For further information about EuroVelo and the 14 routes please contact:

The EuroVelo website:

<http://www.eurovelo.org/>

The European Cyclists' Federation:

<http://www.ecf.com/>

The 21 National EuroVelo Coordination Centres and Coordinators:

<http://www.eurovelo.org/euroveloorganisation/coordination-centres/centres/>

For more details please refer to the European Parliament's study 'The European Cycle Route Network EuroVelo - Challenges and Opportunities for Sustainable Tourism' (September 2012):

<http://www.europarl.europa.eu/committees/en/studiesdownload.html?languageDocument=EN&file=75871>

This project is co-financed by the European Union under the preparatory action "Sustainable Tourism".



DIRECTORATE-GENERAL FOR INTERNAL POLICIES
POLICY DEPARTMENT B
STRUCTURAL AND COHESION POLICIES

 **EuroVelo**
the European cycle route network

EuroVelo is a European cycle route network with an aim to offer a sustainable Trans-European Network. It comprises 14 long distance cycle routes which cover about 70,000 km of which approximately 45,000 km are in existence. The network is managed by the European Cyclists' Federation which is seeking to ensure that all routes offer high standards of design, signage and promotion throughout Europe.

 **ECF**
EUROPEAN CYCLISTS' FEDERATION



Thanks to all who works with EuroVelo and
Good luck in future

